



Enterprise Converter; RTS RCN-400-XX

Overview

RCN-400 provides a new level of performance in connecting LAN, PABX and routers to an Unstructured/Structured E1 or fractional E1 through G.703, 2Mb/s leased lines. RCN-400 is a flexible access multiplexer, enabling transport of Data & Voice services across Telecom carrier's network. The product provides user programmable time slot mapping for the user interfaces. RCN-400 is modular with multiple selections of user interfaces, it has the flexibility to transmit, drop & insert any of the 64 Kbps user signal.

RCN-400 offers Following User Interfaces

- V.35/V.36/V.11/X.21
- 10/100 Base-T
- Fractional E1 interface.



Key Features

- Provides rate & interface conversion between G.703, 120 Ω (75 Ω optional) WAN interface , to various client side interfaces like V.35, V.36, X.21, RS-530,10/100 Base-T, Fractional E1 interface etc.
- E1 interface Complies with G.703, G.704, G.706 & G.732
- Provides Optionally Multiplexing & De multiplexing feature for 3 user interfaces V.35, Ethernet & E1 to WAN E1
- NX64 Kbps drop & Insert Multiplexing & De-multiplexing.
- Data rate up-to 2.048 Mb/sec, selectable from N=1 to 32.
- Ethernet complies to IEEE 802.3
- MAC address filtering enhances security & bandwidth
- Structured and Unstructured modes.
- Various Loop-backs can be generated from the front panel of the converter for fault diagnostics.
- System supports short haul, long haul, & extra long haul applications.
- Complies with EMI/EMC specifications CISPR 22A {1993} for Class B equipment.
- OAM operations through VT 100 dumb terminal.
- LCD display (16x2) for system status.

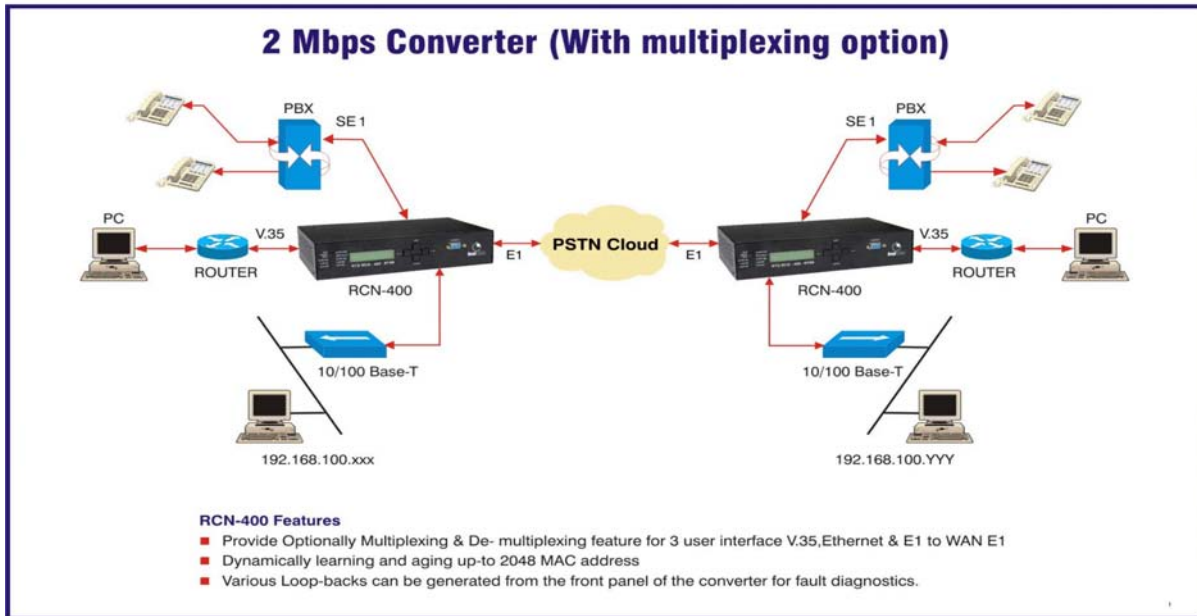
Application

- Enterprise solution for the connectivity of various user interfaces across Telecom carrier network.
- LAN Extensions
- PBX Connectivity
- Router /Bridge Connectivity



Enterprise Converter; RTS RCN-400-XX

APPLICATION DIAGRAM



Specifications

Model	RCN 400
Hardware Specifications	
Power supply	230 V A.C nominal (160V to 240V) / -48 V D.C nominal (-36V to -60V)
Dimensions	Single Slot (S. S.) Enclosure : 255 x 170 x 62 mm & 19" shelf : 586 x 355 x 435 mm
Operating environment	-15 ~55 degree C, 5%~90%RH
Interfaces	
Master(WAN) E1	120 Ohms /75 ohms network interface
Standards	Complies with G.703, G.704, G.706 & G.732
Modes	Structured / Unstructured modes
Line Code	HDB3
	LIU Sensitivity: (I) Short Haul.0 to -6dB (II) Long Haul.0 to -34dB (III) Ext. Long Haul. -20 to -48dB
Clock Options	Internal Clock/ External Clock/ G.703 Recovered Clock
Slave E1	120 ohms /75 ohms network interface
Standards	Complies with G.703, G.704, G.706 & G.732
Modes	Structured.
Line Code	HDB3
	LIU Sensitivity: (I) Short Haul.0 to -6dB (II) Long Haul.0 to -34dB (III) Ext. Long Haul. -20 to -48dB
Clock Options	Internal Clock
Synchronous Interface V.35/V.36/X.21/RS530	Standard M34 pin Connector
Data Rate	Client interface providing up to 2.048 Mb/sec data
Nx64	N x 64 Kbps (N=1 to 32) user configurable as band width requirements
	DTE, DCE soft configurable (Optional)
Ethernet	Compliance to Ethernet & IEEE 802.3 standards
Protocol	Supports standard HDLC protocol
	10 Base-T (RJ-45), IEEE 802.3, half & full duplex
MAC address	Dynamically learning and aging up-to 2048 MAC addresses
Management	
Front panel LEDs	Power supply Indication. E1: E1 Faults (LOS, AIS or Loss of frame), Synchronous Interface: Transmit Data (TD) & Receive Data (RD). Ethernet: Link Up LED. Test & System Fault.



Enterprise Converter; RTS RCN-400-XX

LCD with front panel switches	For System Information, Configuration & Fault Diagnostics
Loop backs	Network-to-Network loop back at G.703 Interface & Client-to-Client loop back at Data Interface
BER Meter	Yes with PRBS generator
Console	RS232 connector for PC connectivity.

Ordering Information: "RCN-400 XX": where "XX" represent nos. 01, 02...10, 11...etc.

Features		Models of "RCN-400-XX"													
		01	02	03	04	05	06	07	08	09	10	11	12	13	14
Interfaces	G.703 Master	*	*	*	*	*	*	*	*	*	*	*	*	*	*
	V.35	*	*					*	*	*	*			*	*
	Ethernet			*	*			*	*			*	*	*	*
	G.703 Slave					*	*			*	*	*	*	*	*
Power Supply	Only AC 220V	*		*		*		*		*		*		*	
	Only DC -48V		*		*		*		*		*		*		*

Note: Please contact factory for other configurations.

RealTime reserves the right to change or modify or update or clarify specifications without notice in the interest of technological advancement.

Manufactured By:
RealTime Systems Ltd.
 247/29, Block-D, Sector-63
 Noida-201301 (UP)
 Ph.No. +91-120-4141500
 Fax No:+91-120-4141549
 E-mail:inquiries@rtsindia.com



Visit us: rtsindia.com

"Most Reliable Networking Products"