



Ethernet to 4/8 E1 Inverse Multiplexer (RCN-500)

Overview

RCN-500 Ethernet to 4/8 E1 converter is capable of providing data conversion from Ethernet 10/100Base-T or 100Base-FX interface to G.703 interface and vice-versa over 1~ 8 E1 channels. It automatically detects and adjusts data transfer speed depending on E1 deployed. UTP or FX options are available for connecting Ethernet. RCN-500, a flexible converter is used in connecting LAN's, connecting end offices, using E1 interfaces of the Telecom network.



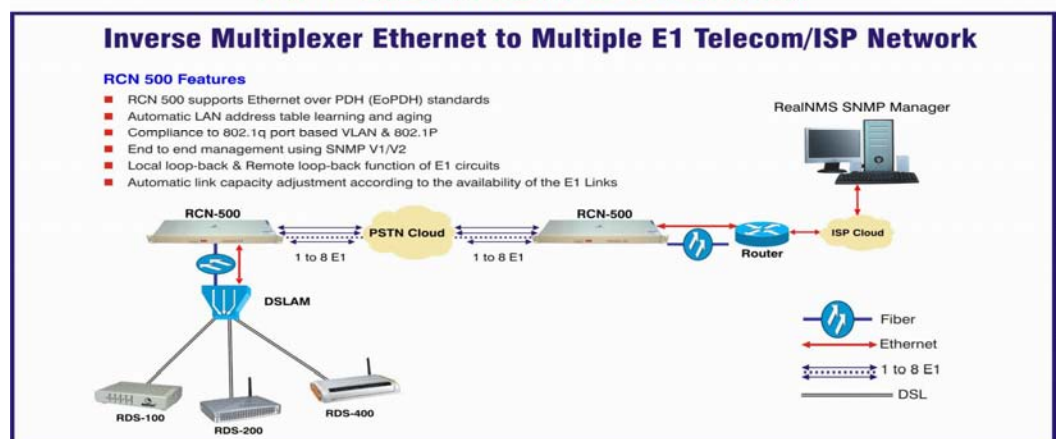
Key Features

- Maximum 8 E1 interfaces, ITU-T G.703/704/823 compatible
- Inverse-multiplexing of up to 8 interleaved E1 channels
- RCN 500 supports Ethernet over PDH (EoPDH) standards
- MAC frames are encapsulated in HDLC frames.
- Automatic link capacity adjustment according to the availability of the E1 links.
- 120 Ohm/75 Ohm interface on the E1 side.
- Automatic LAN addresses table learning and aging.
- End to end management using SNMP V1/V2.
- Capability to reset the remote system.
- Local loop-back & Remote loop back function of E1 circuits
- Ethernet support AUTO-MDIX in UTP mode
- Option is available for 10/100Base-T or 100Base-FX interface for Ethernet.
- 230V AC or -48V DC Power supply option available
- Front panel visual indication for Loss of Signal, Remote Alarm, FCS Error, Loss of Frame and CRC error in E1 channels, and Link/Act, Duplex, Speed and collision indication for Ethernet port & Compact design.

Application

- Bonded Transparent LAN services.
- LAN extensions.
- Ethernet delivery over multiple E1

APPLICATION DIAGRAM





Ethernet to 4/8 E1 Inverse Multiplexer(RCN-500)

Specifications

Model	RCN-500-XX
Hardware Specifications	
G703/E1 Interface	
Impedance	120Ω/75 Ω
Connector	RJ45/BNC
E1 Interfaces	1~8 as per model
Ethernet (10/100Base-T) Interface	
Interface	10/100Base-T, compliant with IEEE802.3; Full/Half Duplex auto negotiation
Auto negotiation & Flow control	Yes
Auto-MDI-MX	Yes
Connector	1 RJ45
Fiber (100Base-FX) Interface	
Interface	100Base-FX, compliant with IEEE802.3u; Full Duplex
Speed	100Mbps
Connector	Single/Multi Mode, Single/Double Fiber Optic Cable
Management	
	SNMP V1/V2 managed system
Loop-backs	Local & Remote loop back
Alarms	E1 & Ethernet Alarms
Power Supply	
Input voltage for internal power	-36V DC ~ -60V DC or 175V AC ~264V AC
Environment	
Temperature	-15°C -- 55°C
Humidity	95%, non condensing

Ordering Information

Model No	Description
RTS RCN-500T/FX-2E1	10/100 Base-T/FX Ethernet to 2 E1 Converter
RTS RCN-500T/FX-4E1	10/100 Base-T/FX Ethernet to 4 E1 Converter
RTS RCN-500T/FX-8E1	10/100 Base-T/FX Ethernet to 8 E1 Converter
RTS RCN-500-SNMP	SNMP Manager card for the 12 slot 19" shelf
RTS RCN-500T/FX-4E1-C	10/100 Base-T/FX Ethernet to 4 E1 Converter card for shelf mounting
RTS RCN-500T/FX-8E1-C	10/100 Base-T/FX Ethernet to 8 E1 Converter card for shelf mounting

RealTime Systems Ltd.
 247/29,Block-D,Sector-63
 Noida-201301 (UP)
 Ph.No. +91-120-4141500
 Fax No:+91-120-4141549
 E-mail:inquiries@rtsindia.com

Visit us:rtsindia.com



"Most Reliable Networking Products"

RealTime reserves the right to change or modify or update or clarify specifications without notice in the interest of technological advancement.