



Fast Ethernet Switches

Overview

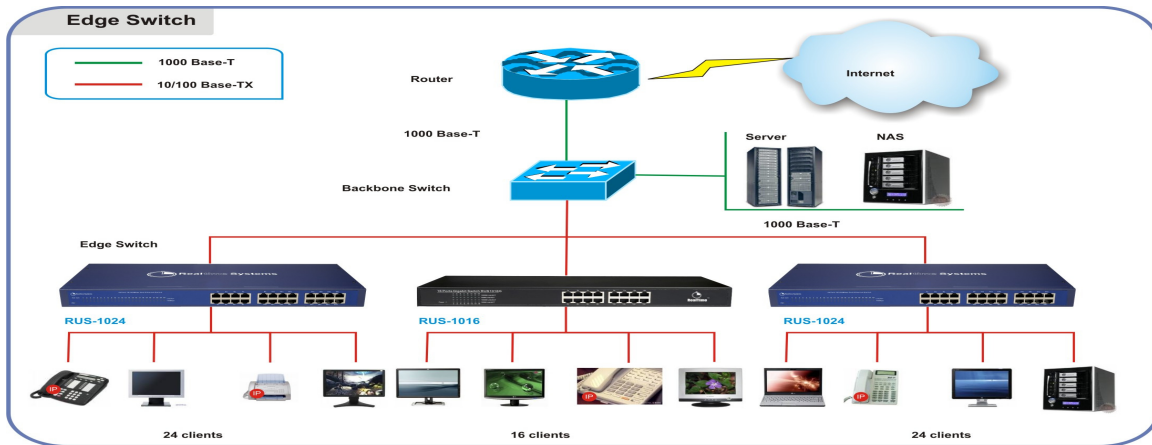
RUS 1016 is the most cost effective 10/100Mbps Fast Ethernet Switch with 16 ports. The Fast Ethernet Switch can improve bandwidth, eliminate unnecessary traffic, and relieve congestion in the networking. The Fast Ethernet Switch has 1K MAC Address table and provides 2 Mbit Buffer capacities.



Key Features

- 10/100Base-T Ports.
- Comply with IEEE 802.3i, IEEE 802.3u Ethernet standards
- Support Auto MDI/MDIX
- Build in 1K MAC address, 2Mbit Buffer.
- Transmission distance better than 100m
- Dynamic LED indications for easy operation & Maintenance.
- DC 7.5V/800mA Power supply

Application



Specifications

Model	RUS-1016
Hardware Specifications	
Connector	16 ports RJ-45 for 10/100 Base-TX
MAC address	1K MAC address with auto learning.
Power requirement	170VAC~260VAC, 50/60 Hz
Operating Environment	0~50 Degree Celcius
Dimensions (WXDXH)	(227x436x43)mm
Switch Specifications	
Switch Architecture	Store & Forward
Standard Compliance	
Network	IEEE 802.3i, IEEE 802.3u Ethernet standards

Ordering Information :RUS 1016;16 port 10/100Mbps Fast Ethernet Switch

RealTime reserves the right to change or modify or update or clarify specifications without notice in the interest of technological advancement.

RealTime Systems Ltd.
247/29,Block-D,Sector-63
Noida-201301 (UP)
Ph.No. +91-120-4141500
Fax No:+91-120-4141549
E-mail:inquiries@rtsindia.com

Visit us:rtsindia.com



"Most Reliable Networking Products"