



## RealConnect-2/4: Extends 1/4 LAN port on G.SHDSL Bridge/Router

### Overview

Based on Digital Subscriber Line (DSL) technology, **Real Time's** new DSL product, **RealConnect-2/4** provides an affordable, flexible, and efficient Internet access solution for SOHO customers, while reducing deployment and operational costs for service providers. Using existing telephone lines, the **RealConnect-2/4** concentrates all traffic onto a single high-speed trunk for Internet activities or sharing a corporate intranet. Through the simple-yet-powerful management user interface of the **RealConnect-2/4**, networks administrators can complete a managed network deployment just in seconds



### Key Features

- Physical WAN port (SHDSL) and logical WAN ports (WAN 1~8). The physical WAN port connects **RealConnect-2/4** to the WAN. The logical WAN port or ports allow you to create virtual WAN connections for plural destinations
- **RealConnect-2/4** supports two connection modes: bridging and routing. Currently, it comes pre-configured with routing mode
- Shared Internet Access. All users on the LAN can access the Internet through the SHDSL Router, using only a single external IP Address using NAT
- When **RealConnect-2/4** operates in bridging mode, it behaves like a wire connecting a local PC directly to a service provider's network
- The Internet (WAN port) connection supports Ethernet over ATM, PPPoA (PPP over ATM), IPoA (IP over ATM), and PPPoE (PPP over Ethernet), as well as "Direct Connection" type services
- Fixed or Dynamic IP Address. On the Internet (WAN port) connection, the SHDSL Router supports both Dynamic IP Address (IP Address is allocated on connection) and Fixed IP Address
- **RealConnect-2/4** supports two kinds of ATM QoS service: constant bit rate (CBR) and unspecified bit rate (UBR)
- PPP supports user authentication with PAP/CHAP/MS-CHAP

### Advanced Internet Functions

- Virtual Servers. This feature allows Internet users to access Internet servers on your LAN
- DMZ. Support: **RealConnect-2/4** can translate public IP addresses to private IP address to allow unrestricted 2-way communication with Servers or individual users on the Internet. This provides the most flexibility to run programs, which are incompatible in NAT environment

### LAN Features

- DHCP Server Support
- Multi Segment LAN Support. LANs containing one or more segments are supported; via the RealConnect-2/4's RIP (Routing Information Protocol) support and built-in static routing table.
- With one/four Auto-negotiation, Auto MDIX Ethernet ports. RealConnect-2/4 eliminates most cabling inconvenience

### Configuration & Management

- Easy Setup and Remote Management. There are three methods to logon to **RealConnect-2**: serial console, Telnet, and web interface
- Easy configuration and management with password control for various application environments
- SNMP management with MIB II
- Getting enhancements and new features via Internet software upgrade
- Backup and Restore Configuration

### Security Features

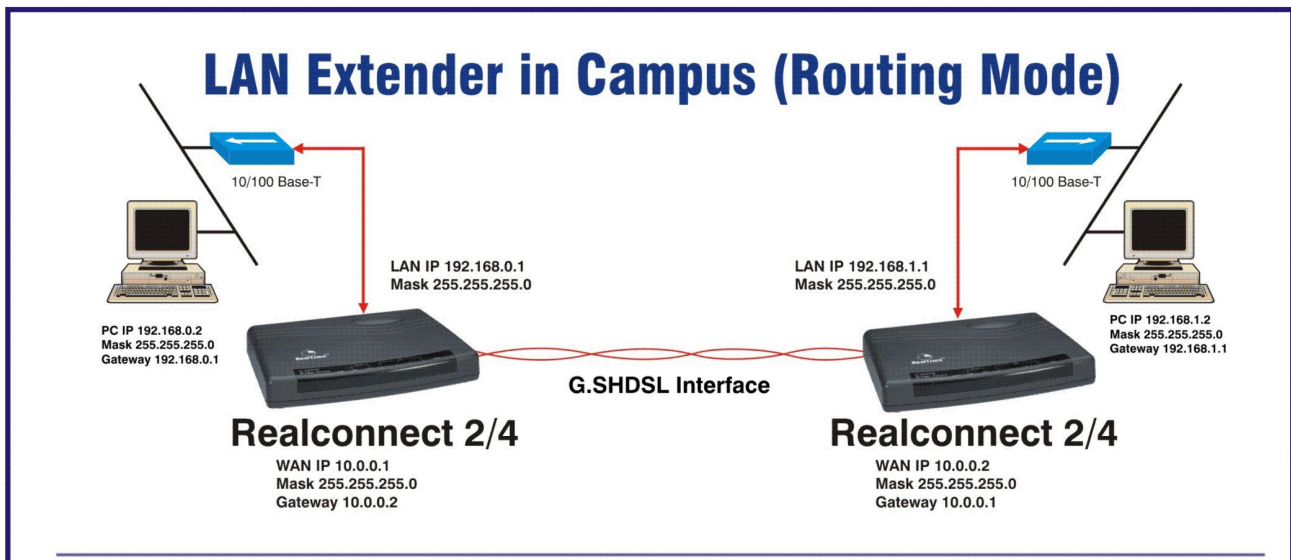
- Password - protected Configuration. Optional password protection is provided to prevent unauthorized users from modifying the configuration data and settings
- NAT Protection



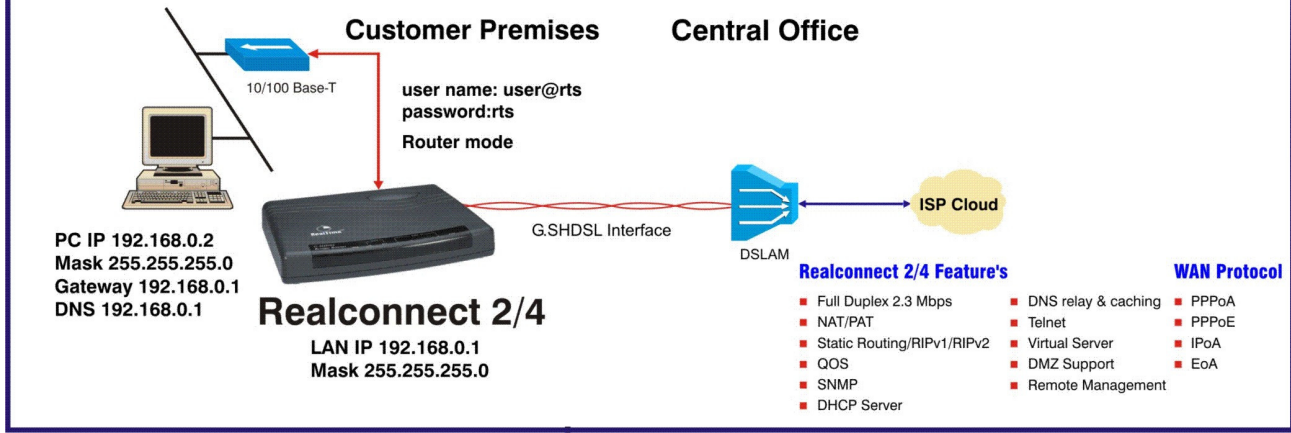
## RealConnect-2/4: Extends 1/4 LAN port on G.SHDSL Bridge/Router

- Administrator can restrict user's permission of accessing Internet by pre-defining Legal Address Pool.
- Telnet port number. Administrator can specify the TCP port number of the Telnet server other than the default TCP port number 23 so that Telnet access to default port number cannot reach RealConnect-2.

### APPLICATION DIAGRAM



### G.SHDSL Symmetrical Bandwidth for Enterprises





## RealConnect-2/4: Extends 1/4 LAN port on G.SHDSL Bridge/Router

### Specifications

Model	RealConnect-2/4
<b>Hardware Specifications</b>	
<b>Interfaces</b>	G.SHDSL – 2 Wire/4 Wire interface; ITU-T G.991.2, Ethernet – 1~4 10/100 Base-T port
<b>Protocols and Standards</b>	IEEE 802.3 (Ethernet); IEEE 802.3u (Fast Ethernet); RFC 768 UDP; RFC 783 TFTP; RFC 791 IP; RFC 792 ICMP; RFC 793 TCP; RFC 826 ARP ;RFC 1034, 1035 DNS ;RFC 1058 RIP; RFC 1631 NAT ;RFC 2068 HTTP ;RFC 2131 DHCP ;RFC 1661 PPP ;RFC 2364 PPP over AAL5 ;RFC 2516 PPP over Ethernet ;RFC 1577 Classical IP over ATM ;RFC 1483/2684 Multi-protocol over AAL5 (bridged and routed PDU) ;RFC 1157 SNMP ;RFC 1901 SNMPv2
<b>Speed</b>	G.SHDSL : 192Kbps to 2.304Mbps (64Kbps per channel) LAN Switch: 10/100 Mbps Auto-negotiation, Auto MDI/MDI-X
<b>Transparent learning Bridge</b>	IEEE 802.1 D transparent learning bridge
<b>Cabling</b>	G.SHDSL: AWG26 or higher 10 Base T: UTP/STP Category 3 or 5
<b>Management</b>	Web interface, Telnet, Serial Console
<b>Internet Connection Type</b>	Ethernet over ATM, PPPoA, IPoA, PPPoE
<b>Virtual Server</b>	10
<b>DHCP clients</b>	253
<b>Routing</b>	RIPv1/v2 or static routing table (20 Entries Max.)
<b>Other feature</b>	Remote Management Optional Password protection for web configuration interface SNMP support Upgrade through TFTP/WEB interface
<b>Power Supply</b>	Input Voltage: 9V DC, 1A & Power Consumption: 9 watts
<b>Operating Environment</b>	0~45°C & Relative Humidity: 0~90 % ( non-condensing)
<b>Dimensions</b>	145x187x33 mm

### Ordering Information:

Model No	Description
<b>Realconnect-2</b>	Extends 1 LAN port on G.SHDSL Bridge/Router
<b>Realconnect-4</b>	Extends 4 LAN port on G.SHDSL Bridge/Router

**Manufactured By:**  
**RealTime Systems Ltd.**  
 247/29, Block-D, Sector-63  
 Noida-201301 (UP)  
 Ph.No. +91-120-4141500  
 Fax No: +91-120-4141549  
 E-mail: inquiries@rtsindia.com



Visit us: [rtsindia.com](http://rtsindia.com)

"Most Reliable Networking Products"

RealTime reserves the right to change or modify or update or clarify specifications without notice in the interest of technological advancement.