



FM 87691  
ISO 9001:2000 Certified



RealTime™

RTS CASE STUDY

## Connect-Communicate-Converge



### Audience

The primary audience for this case is network engineers, network administrators, RTS engineers, and system engineers.

The secondary audience for this case is network designers and project managers.

### Reliance Communication lowers the deployment cost and speeds-up the Last Mile Ethernet deployment with RealTime's Media Converter

#### Challenges

- Feature Rich
- Economical
- Flexible and Scalable
- Reliable Product
- Manageable

Media Converter in comparison to many International brands with following features

15KM fiber Link distance

- Single Mode, Dual fiber
- Jumbo Packet Support
- LPT feature for link diagnosis
- Dual Power Supply

#### Client's Requirement

The popularity of Ethernet as a scalable interface over TDM interface is path breaking.

Ethernet technology dominates the market for Local Area Networks (LAN), and Ethernet interfaces are ubiquitous, inexpensive and reliable.

At the same time businesses are becoming more and more geographically diverse, with multiple local sites interconnected to a few main sites housing the company's core IT facilities. In addition to this the popularity of Internet applications is increasing day by day.

To meet the demand of networking & scalability over TDM, most of the incumbent ISPs are choosing Metro Ethernet as interface of choice. One of India's largest Telecom Service Provider Reliance Communication has a vast network of Metro Ethernet. Reliance communications selected RealTime

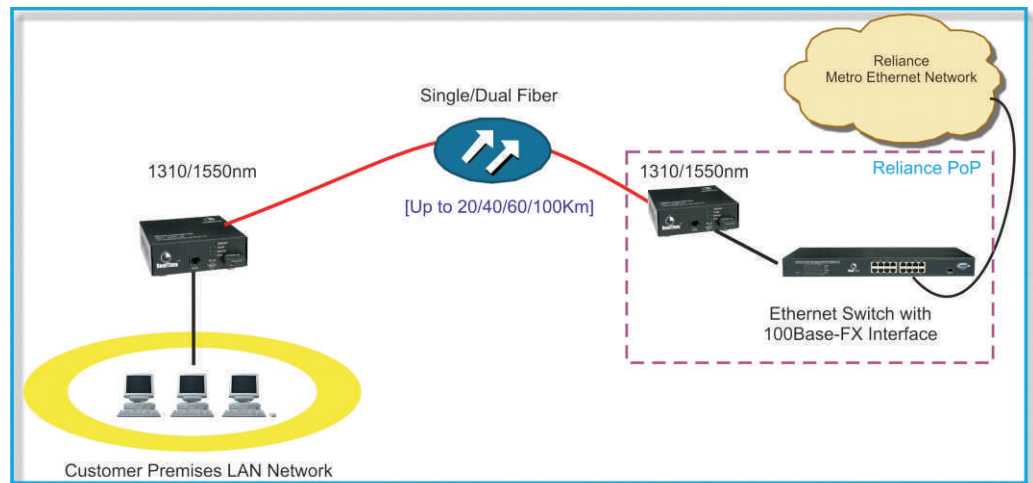
#### Solution Offered

RealTime Media Converter RMC 10/100M exceeds the minimum feature requirement of the customer. Following are the features supported by the Media Converter delivered to Reliance Communication.

- 25KM fiber Link distance
- Supports Single Mode, Dual fiber transceiver
- Jumbo Packet support up to 9216 bytes
- LPT feature for link diagnosis
- Supports Dual Power Supply
- VLAN (802.1Q) Pass through
- Auto MAC Address Learning and Aging

## Connect-Communicate-Converge

### Application



### Benefits

- Copper plant saving
- Longest Copper reach
- TC-PAM coding supports multiple services in the copper bundle
- Plug & Play Modem avoids expensive truck rolls to customer premises.
- Intuitive user interface helps fault diagnosis quickly.
- The dual power supply offered with this product is very useful for mission critical applications.
- Extensive support network from RealTime Systems