



## Enterprise Router ; ER - 2700

### Overview

**ER-2700 router** is Multiple Service Router (MSR) for Access and Enterprise segment. ER-2700 routers are designed to deliver voice, video, data, internet access, and other applications. ER-2700 routers are scalable from 3 serial V.35 WAN ports to multiple WAN ports. These routers are modular, cost effective, and equipped with encryption engine to provide security. ER-2700 routers are designed according to industry standard protocols to guarantee interoperability with standard products.

ER-2700 routers facilitate organizations to build a foundation for an intelligent, secure, multi-feature, cost-effective network.



### Key Features

#### Multiple WAN and LAN Services

- Voice, Data, Internet access, Video
- WAN protocols PPP, HDLC, Frame Relay
- Static and Dynamic NAT/PAT
- G.SHDSL interface to support leased line services
- IGMP supporting PIM-DM, PIM-SM and DVMRP
- Supports two 10/100 Base-T Ethernet ports
- Built in ISDN BRI support
- Multiple WAN interfaces (3 V.35 and 2 E1 interfaces are fixed and optional WAN interface card)

#### Security

- VPN with IPSec, IPSec/L2TP and IPSec/GRE
- IPSEC Will support MD5/SHA, DES/3DES encryptions
- Stateful and Stateless packet Filtering
- AAA, Denial of Service
- ACL's ( Standard IP Access Lists & Extended IP Access Lists)

#### IPv6

- Support version 6 (IPv6)

#### Supports Multiple Routing Protocols

- Supports Static Routing, OSPF, RIPv1, RIPv2 and BGP-4

#### Quality of Service

- FIFO, PQ, CQ, FQ, WFQ, CAR, Rate-limit, class-map and policy map



## Enterprise Router ; ER - 2700

### Stability and performance

- Modular Architecture
- Distributed software architecture enables all software functions within the router to work independently

### High Reliability

- Hot swappable interface cards

### Interoperability

- Interoperability across multiple products has been achieved by using industry standard Protocols

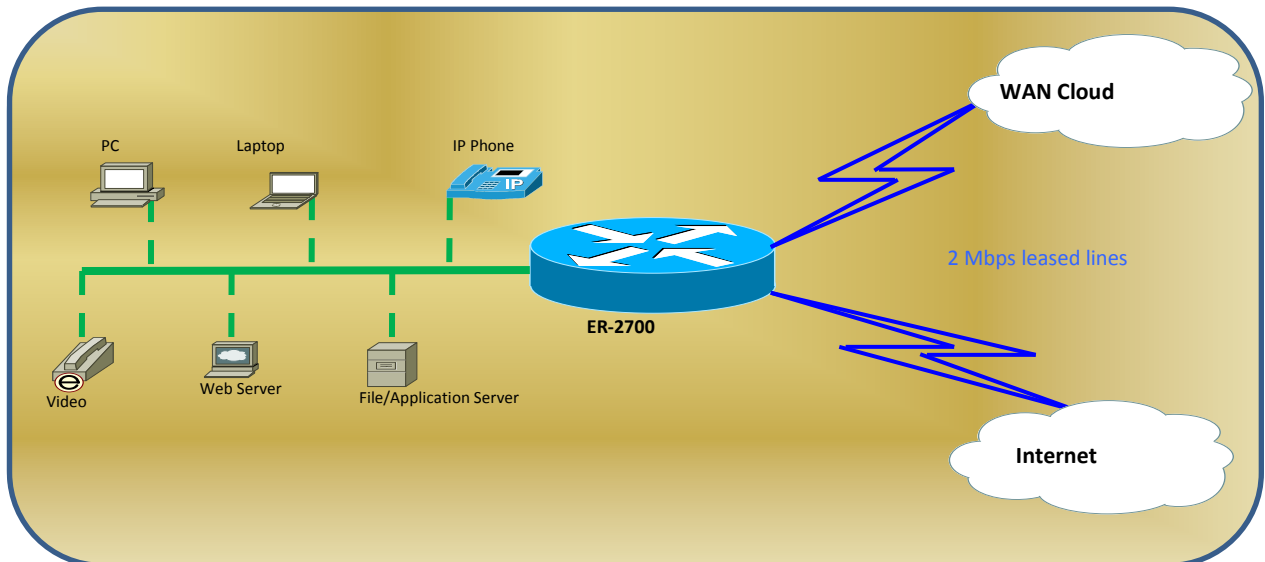
### Network Management

- Installation
- Fault management
- Configuration management
- Performance management
- Security management
- User friendly CLI with two level passwords, SNMP, Telnet, trace route, logging, tracing, debugging of different events, TFTP

### Hardware Architecture

- Dual core 64-bit Power QUICC II Communication Processor. The Core processor operates at 733 MHz and the RISC CPM engine operates at 400 MHz
- SRAM support up-to 512MB
- EMI/EMC Complaint
- Flash support 1 Gigabytes

### Application





## Enterprise Router ; ER - 2700

### Specifications

<b>Model</b>	<b>ER-2700</b>
<b>Router Features and Protocol Support</b>	
<b>Communication</b>	PPP, HDLC, Frame Relay
<b>Security</b>	ACL, NAT, AAA RADIUS, PAP, CHAP and CBAC, stateful and stateless packet filtering
<b>Route Protocol</b>	RIP V1 and V2, OSPF, BGP-4 and Static
<b>VPN</b>	IPSEC, GRE, L2TP, MD5, SHA, DES, 3DES
<b>QOS</b>	CQ, PQ, FQ, WFQ. FIFO, CAR, Class-Map and Policy-MAP
<b>Application Management</b>	DHCP server, PING, Trace Route, telnet, TFTP
<b>Management</b>	SNMP, Telnet, CLI
<b>Throughput</b>	200KPPS
<b>Hardware Specifications</b>	
<b>LAN</b>	2x 10/ 100 Base-TX (RJ-45)
<b>WAN</b>	3 x Serial Port (DB-25) and 2 x Serial Port (DB-25) or 2 x G.703 (RJ-45) Port
<b>ISDN</b>	1 x (RJ-45 )Port
<b>Console</b>	1 x (RJ-45) port
<b>Power Supply</b>	100-240V AC, 50/60 Hz
<b>LED</b>	Power, LAN, WAN ISDN, and Link/ Activity
<b>Operating Environment</b>	Operating: Temperature -15 ~ 55 degree C; Humidity 95% (no-condensing)

### Ordering Information

**ER-2700**-Enterprise router 2700 Chassis (with 3-V.35 built in interfaces)

Interface cards	Description
<b>ERW-1V35</b>	WAN Card with one V.35 Serial interface
<b>ERW-2V35</b>	WAN Card with two V.35 Serial interfaces
<b>ERW-1E1</b>	WAN Card with one channelised E1 interface
<b>ERW-1E1&amp;1V35</b>	WAN Card with one channelised E1 and one V.35 Serial interfaces
<b>ERW-2E1</b>	WAN Card with two channelised E1 interfaces
<b>ERW-DSL - 1 / 2</b>	WAN Card with one G.SHDSL interface with 1&2 pair option

RealTime reserves the right to change or modify or update or clarify specifications without notice in the interest of technological advancement.

**Manufactured By:**  
**RealTime Systems Ltd.**  
 247/29, Block-D, Sector-63  
 Noida-201301 (UP)  
 Ph.No. +91-120-4141500  
 Fax No: +91-120-4141549  
 E-mail: inquiries@rtsindia.com



Visit us: rtsindia.com

"Most Reliable Networking Products"