



Enterprise Router; ER-2900

Overview

ER 2900 router is Multiple Service Router (MSR) for Access and Enterprise segment. ER 2900 routers are designed to deliver voice, video, data, Internet access, and other applications. ER 2900 routers are designed to provide multiple services capable of handling multiple features beyond routing. ER 2900 routers are scalable from 5 WAN (3 V.35 & 2 E1) ports to multiple WAN ports. They are modular, cost effective, equipped with encryption engine to provide security. ER 2900 routers are designed according to industry standard protocols to guarantee interoperability with standard products.

ER 2900 routers facilitate organizations to build a foundation for an intelligent, secure, multi-feature and cost effective network.



Key Features

Multiple WAN and LAN Services

- Voice, Data, Internet access, Video
- WAN protocols PPP, HDLC, Frame Relay
- Static and Dynamic NAT/PAT
- G.SHDSL interface to support leased line services
- IGMP supporting PIM-DM, PIM-SM and DVMRP
- Supports two 10/100 Base-T Ethernet ports
- Built in ISDN BRI support
- Multiple WAN interfaces (3 V.35 and 2 E1 interfaces are fixed and optional WAN interface card)

Security

- VPN with IPSec, IPSec/L2TP and IPSec/GRE
- IPSEC Will support MD5/SHA, DES/3DES encryptions
- Stateful and Stateless packet Filtering
- AAA, Denial of Service
- ACL's (Standard IP Access Lists & Extended IP Access Lists)

IPv6

- Support version 6 (IPv6)

Supports Multiple Routing Protocols

- Supports Static Routing, OSPF, RIPv1, RIPv2 & BGP-4

Quality of Service



Enterprise Router; ER-2900

- FIFO,PQ,CQ,FQ,WFQ,CAR, Rate-limit, class-map & policy map

Stability and performance

- Modular Architecture
- Distributed software architecture allows all software functions within the router to work independently

High Reliability

- Hot swappable interface cards

Interoperability

- Interoperability across multiple products has been achieved by using industry standard Protocols

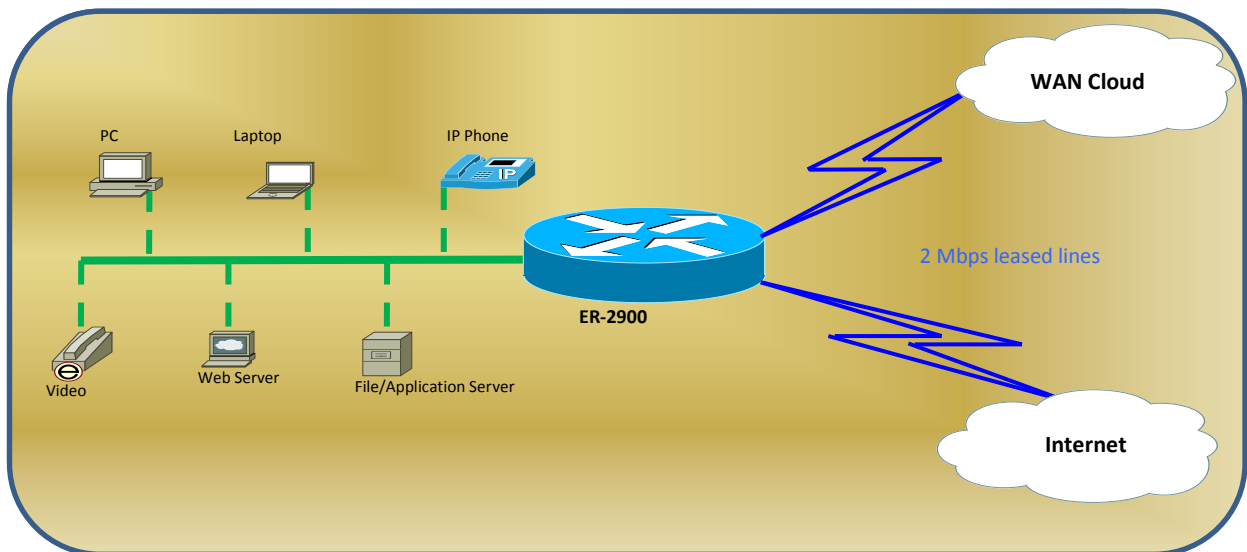
Network Management

- Installation
- Fault management
- Configuration management
- Performance management
- Security management
- User friendly CLI with two level passwords, SNMP, Telnet, trace route, logging, tracing, debugging of different events, TFTP

Hardware Architecture

- Dual core 64-bit Power QUICC II Communication Processor. The Core processor operates at 733 MHz and the RISC CPM engine operates at 400 MHz
- SRAM support up-to 512MB
- Flash support 1 Gigabytes
- EMI/EMC Complaint

Application





Enterprise Router; ER-2900

Specifications

Model	ER 2900
Router Features and Protocol Support	
Communication	PPP, HDLC, Frame Relay
Security	ACL, NAT, AAA RADIUS, PAP, CHAP and CBAC, stateful and stateless packet filtering
Route Protocol	RIP V1 and V2, OSPF,BGP-4 and Static
VPN	IPSEC,GRE,L2TP,MD5,SHA,DES,3DES
QOS	CQ, PQ, FQ, WFQ. FIFO, CAR, Class-Map and Policy-MAP
Application	DHCP server, PING, Trace Route, telnet, TFTP
Management	SNMP, Telnet, CLI
Throughput	280KPPS
Hardware Specifications	
LAN	2x 10/ 100 Base-TX (RJ-45)
WAN	3 x Serial Port (DB-25) and 2 x G.703 (RJ-45)Port or 1 x Serial Port (DB-25) and 1 x G.703 (RJ-45) Port
ISDN	1 x(RJ-45)Port
Console	1 x(RJ-45) port
Power Supply	100-240V AC, 50/60 Hz
LED	Power, LAN, WAN ISDN, and Link/ Activity
Operating Environment	Operating: Temperature -15 ~ 55 degree C; Humidity 95% (no condensing)

Ordering Information

ER-2900-Enterprise router 2900 Chassis (with 3-V.35 & 2-E1 built in interfaces)

Interface cards	Description
ERW-1V35	WAN Card with one V.35 Serial interface
ERW-2V35	WAN Card with two V.35 Serial interfaces
ERW-1E1	WAN Card with one channelised E1 interface
ERW-1E1&1V35	WAN Card with one channelised E1 and one V.35 Serial interfaces
ERW-2E1	WAN Card with two channelised E1 interfaces
ERW-DSL - 1 / 2	WAN Card with one G.SHDSL interface with 1&2 pair option

RealTime reserves the right to change or modify or update or clarify specifications without notice in the interest of technological advancement.

Manufactured By:
RealTime Systems Ltd.
 247/29,Block-D,Sector-63
 Noida-201301 (UP)
 Ph.No. +91-120-4141500
 Fax No:+91-120-4141549
 E-mail:inquiries@rtsindia.com



Visit us: rtsindia.com

"Most Reliable Networking Products"